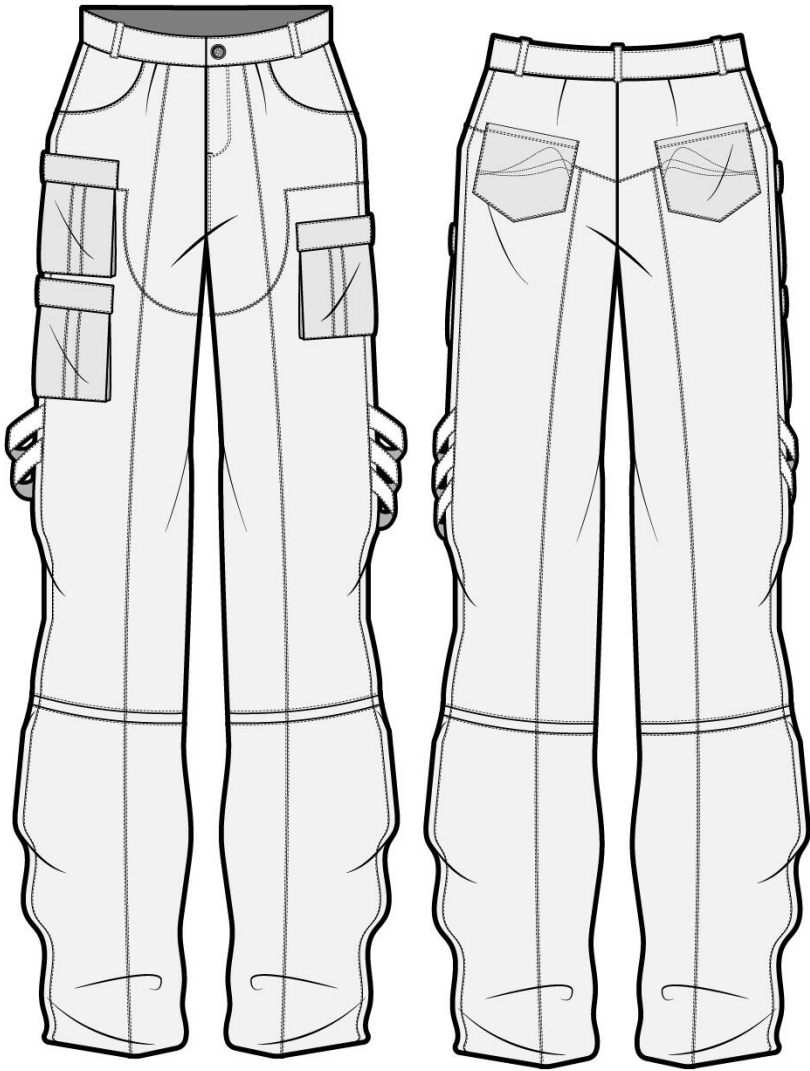




5 Pocket Utility Cargo Pants - Harrison - Style #100350

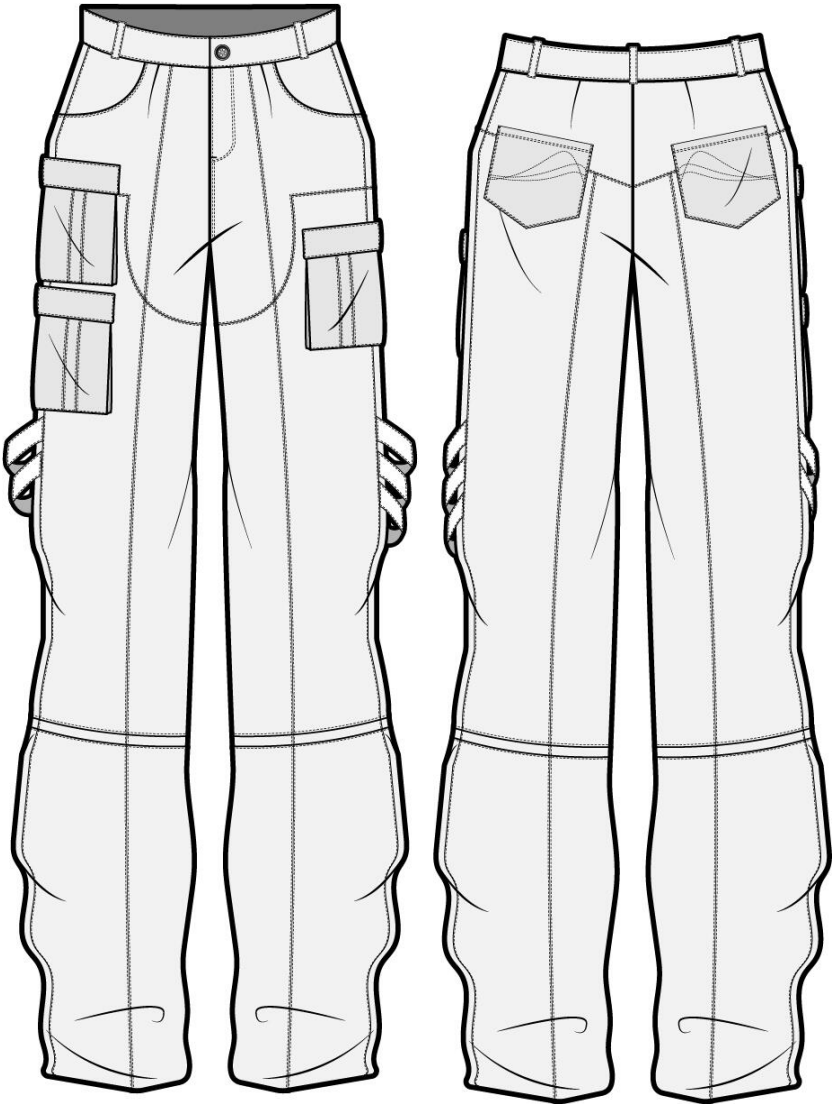
AM 475 - FA2022, Unisex/Non-Gendered, FA2022, 2022-2023

Summary



5 Pocket Utility Cargo Pants - Harrison

Name	5 Pocket Utility Cargo Pants - Harrison
Style No.	100350
Description	Utility Cargo Pants with 5 Pockets
Division	AM 475 - FA2022
Category	Unisex/Non-Gendered
Season	FA2022
Year	2022-2023
Size Scale	32 -Sample size
	<div>3032343638</div>
Factory	To Be Determined
COO	Bangladesh
Main Fabric	100% Zimmerman Cotton Twill
New/Carryover	New Style
Style Status	In Development
Sample Development Status	1st Sample
MSRP	88
Target Margin (%)	45
MOQ	3000/style/color
Leadtime	180 Days
AM 475 - Developer Name	Miles Harrison
Created by/Author	12/11/2022
	Miles Harrison
	millas@colostate.edu



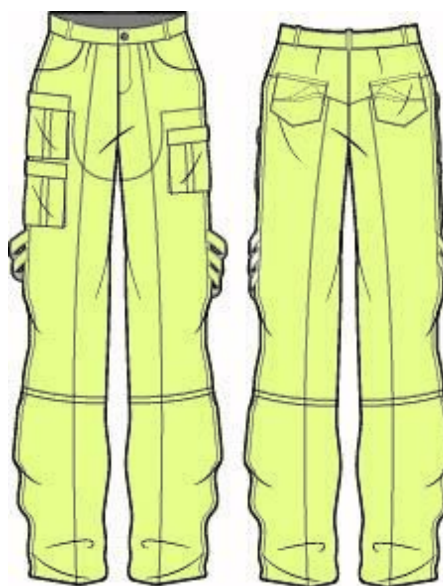
Cargo Pants BW Flat Final Tech Pack-1



5 Pocket Utility Cargo Pants - Harrison - Style #100350

AM 475 - FA2022, Unisex/Non-Gendered, FA2022, 2022-2023

Images / Color Variants



Cargo Pants final color way 1(1)-1

1. ● Key Lime - Harrison

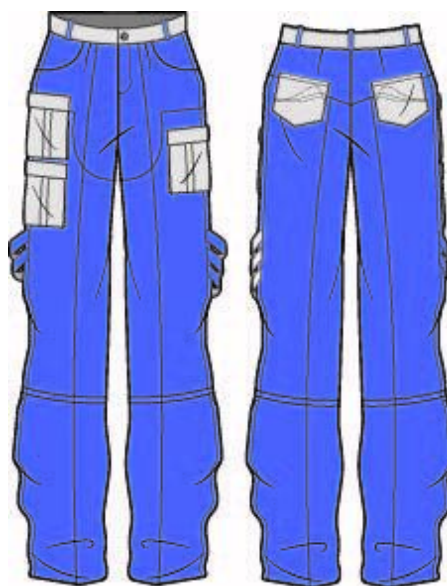
Custom Code: Key Lime - Harrison



5 Pocket Utility Cargo Pants - Harrison - Style #100350

AM 475 - FA2022, Unisex/Non-Gendered, FA2022, 2022-2023

Images / Color Variants



Cargo Pants final color way 2(1)-1

2. ● 272 C Mulberry - Harrison

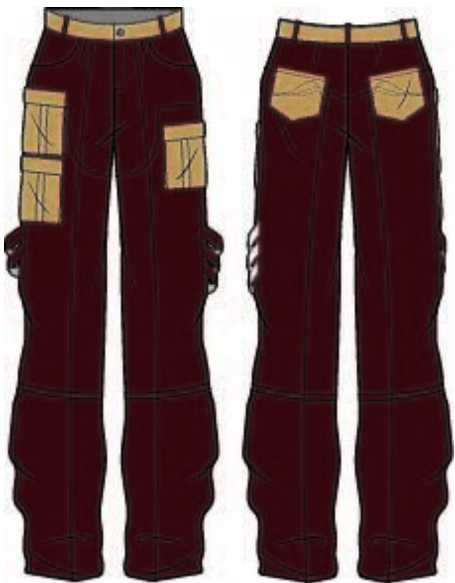
Custom Code: 272 C Mulberry - Harrison



5 Pocket Utility Cargo Pants - Harrison - Style #100350

AM 475 - FA2022, Unisex/Non-Gendered, FA2022, 2022-2023

Images / Color Variants



Cargo Pants final color way 3(1)-1

3. ● 504 C Wine - Harrison

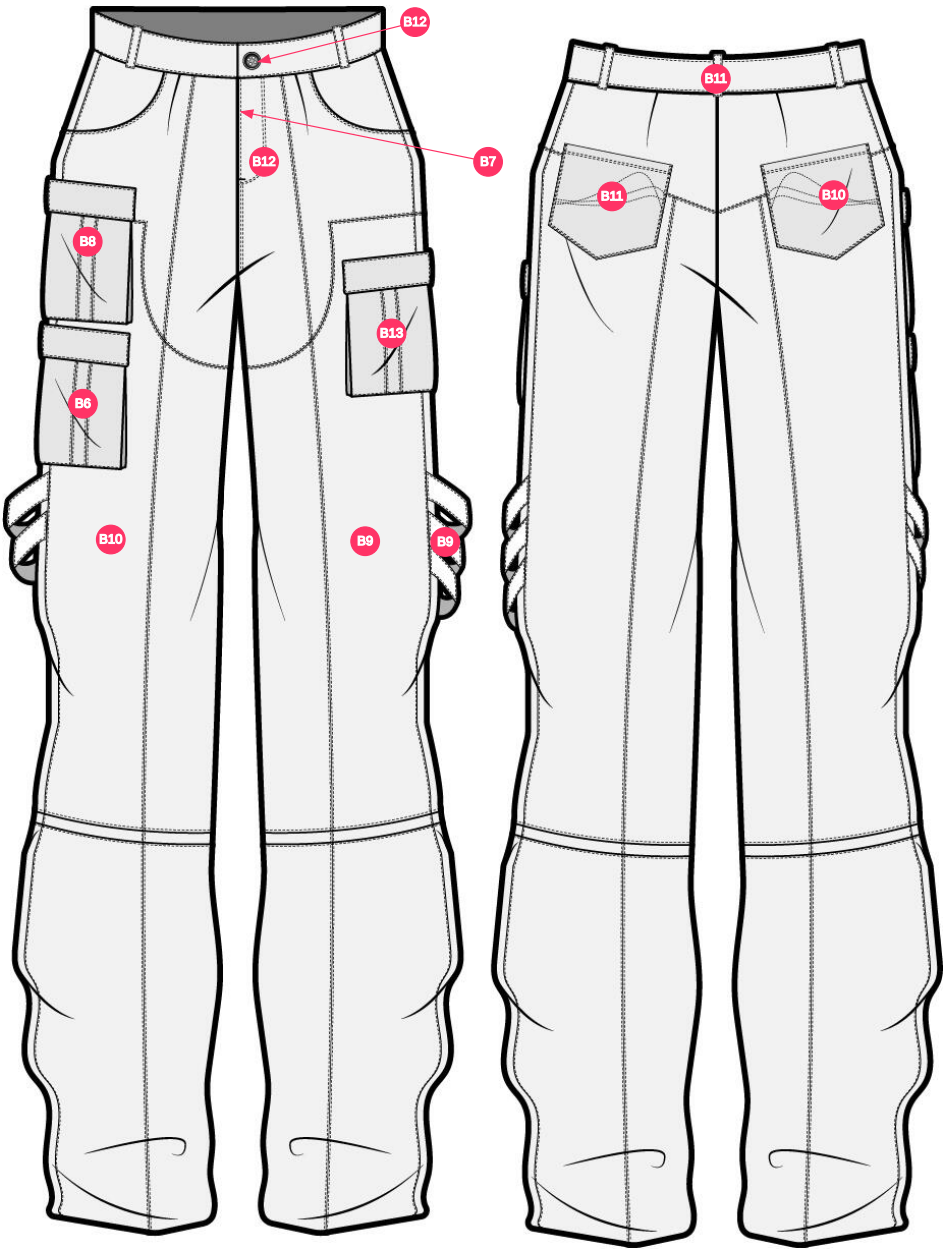
Custom Code: 504 C Wine - Harrison



5 Pocket Utility Cargo Pants - Harrison - Style #100350

AM 475 - FA2022, Unisex/Non-Gendered, FA2022, 2022-2023

Images / Annotated Component
Layout Image



Components (13)

- B1 Cargo Pocket
- B2 Zimmerman Tan Cotton Twill-Harrison
- B3 Zimmerman Tan Cotton Twill-Harrison
- B4 Zimmerman Tan Cotton Twill-Harrison
- B5 4 Hole Button
- B6 Zimmerman Tan Cotton Twill-Harrison
- B7 YAB #5 Copper Swiss Teeth Platinum Metal Zipper - Harrison
- B8 Zimmerman Tan Cotton Twill-Harrison
- B9 Zimmerman Tan Cotton Twill-Harrison
- B10 Zimmerman Tan Cotton Twill-Harrison
- B11 Zimmerman Tan Cotton Twill-Harrison
- B12 1006 White 250M Guterman Natural Cotton Thread-Harrison
- B13 Zimmerman Tan Cotton Twill-Harrison

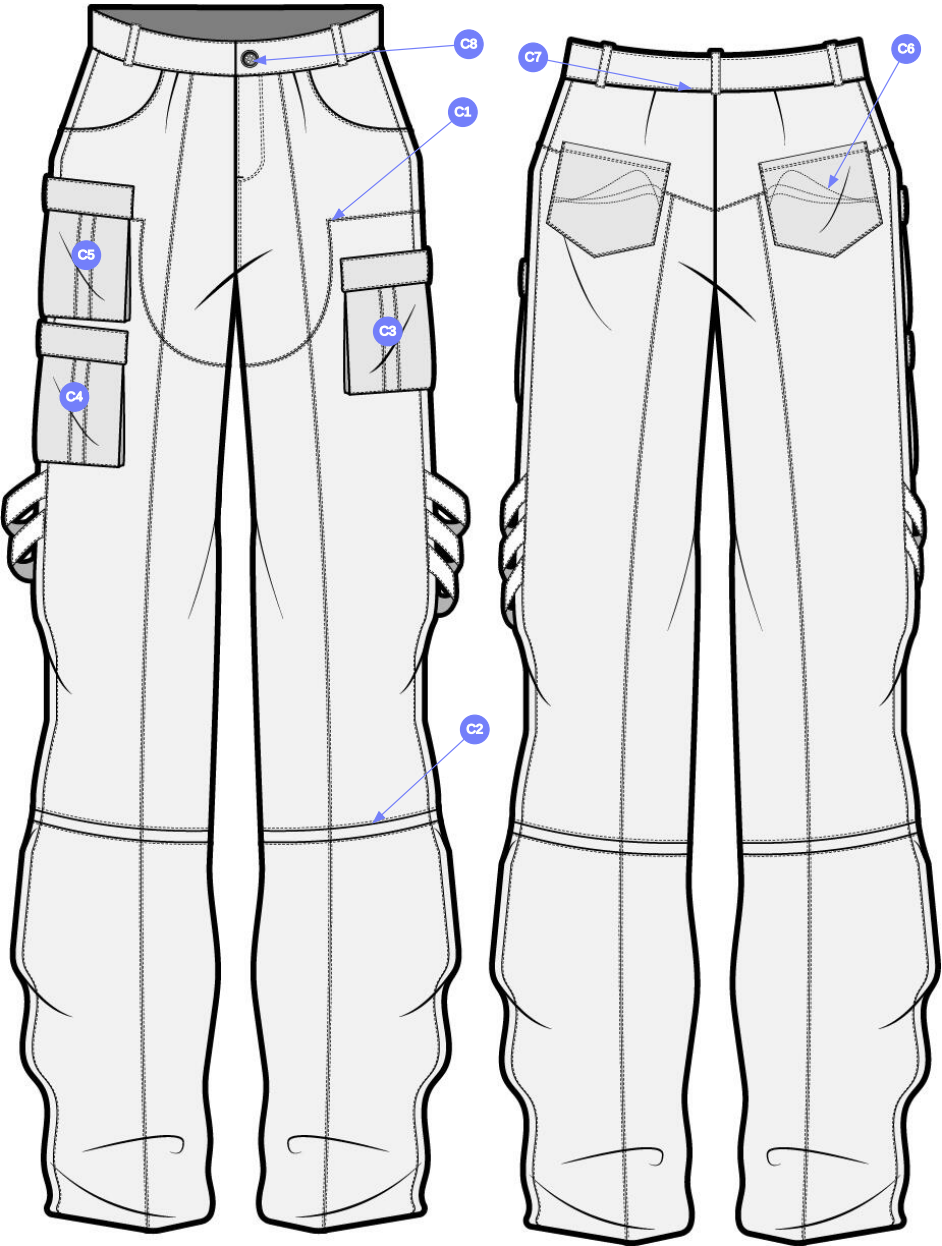
Cargo Pants BW Flat Final Tech Pack-1



5 Pocket Utility Cargo Pants - Harrison - Style #100350

AM 475 - FA2022, Unisex/Non-Gendered, FA2022, 2022-2023

**Images / Annotated
Construction Detail Image(s)**



Construction Details (8)

- C1** Double Needle Top Stitch
- C2** Single needle top stitch
- C3** Cargo Pocket
- C4** Cargo Pocket
- C5** Cargo Pocket
- C6** Top stitch
- C7** LSk waistband
- C8** Buttonhole Stitch - QH

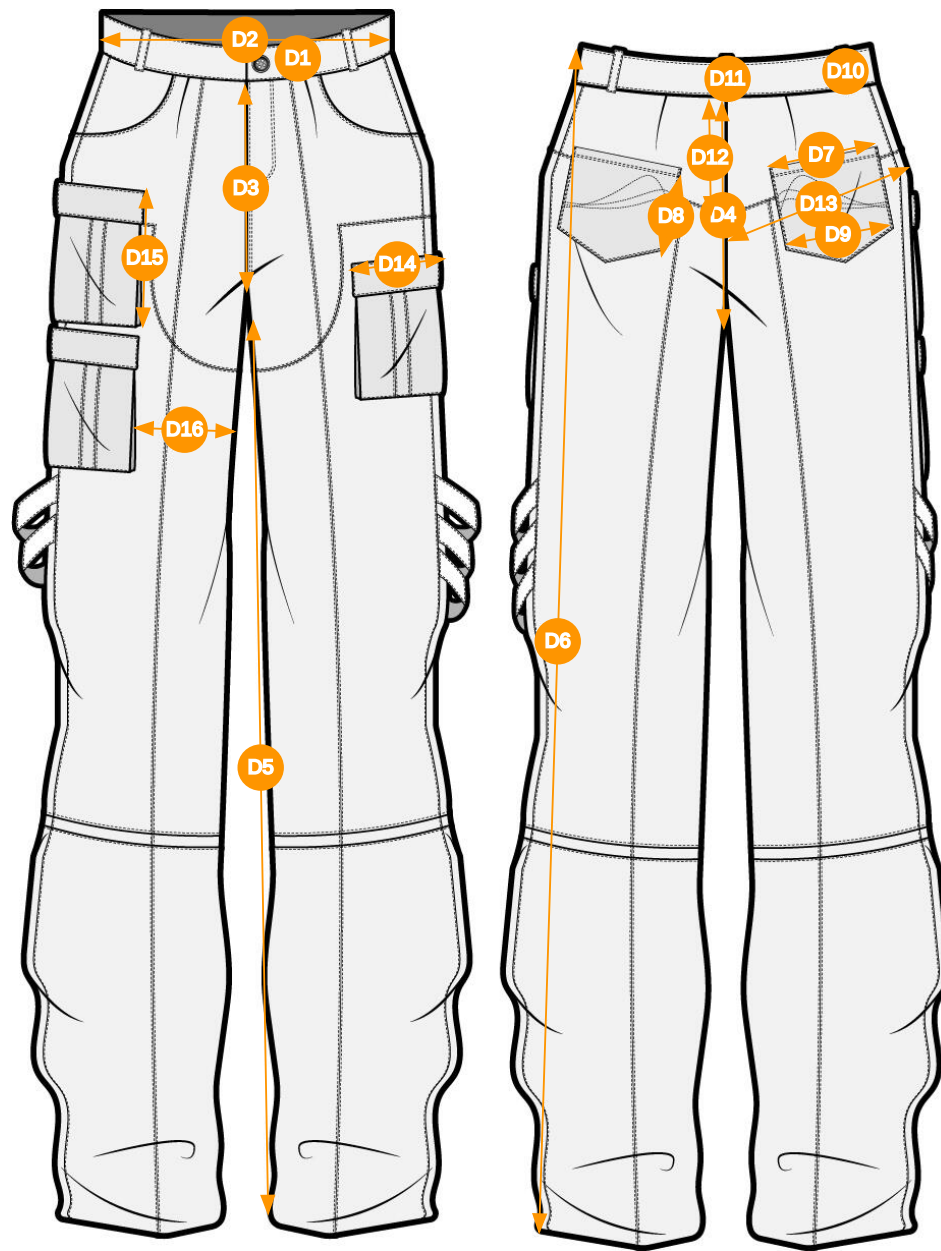
Cargo Pants BW Flat Final Tech Pack-1 (Copy)



5 Pocket Utility Cargo Pants - Harrison - Style #100350

AM 475 - FA2022, Unisex/Non-Gendered, FA2022, 2022-2023

Images / Annotated POM Image



Cargo Pants BW Flat Final Tech Pack-1 (Copy)

Points of measure (16)

- D1** Waistband Depth
- D2** Waistband Width Circumference (woven)
- D3** Front Rise
- D4** Back Rise
- D5** Inseam
- D6** Outseam
- D7** Applied Pocket Width
- D8** Back Bottom Pocket Vertical
- D9** Back Bottom Pocket Horizontal
- D10** Belt Loop Length
- D11** Belt Loop Width
- D12** Skirt/Pant Yoke Depth Back
- D13** yoke width
- D14** Cargo Pocket Width
- D15** Cargo Pocket Length
- D16** Horizontal Cargo Pocket Placement from Inseam



Packaging Mockup-1



Photoshop Hang Tag mockup-1














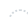
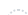
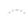




Care Label-1



5 Pocket Utility Cargo Pants - Harrison - Style #100350

AM 475 - FA2022, Unisex/Non-Gendered, FA2022, 2022-2023

BOM > Set 1 of 1

Component		Qty	Placement	Status	COO	1.  Key Lime - Harrison Code: Key Lime - Harrison	2.  272 C Mulberry - Harrison Code: 272 C Mulberry - Harrison	3.  504 C Wine - Harrison Code: 504 C Wine - Harrison
FABRICS								
1	Zimmerman Tan Cotton Twill-Harrison Code: 0000 Supplier: To Be Determined Content (Fiber Content): 100% Cotton Fabric Width: 58" Weight (GSM): 330 Dye Method: N/A AM 475 - Developer's Name: Miles Harrison	2 /yd		In Development	Bangladesh	-  Key Lime - Harrison Custom Code: Key Lime - Harrison Price: \$14.00	-  272 C Mulberry - Harrison Custom Code: 272 C Mulberry - Harrison Price: \$14.00	-  504 C Wine - Harrison Custom Code: 504 C Wine - Harrison Price: \$14.00
TRIMS								
2	YAB #5 Copper Swiss Teeth Platinum Metal Zipper - Harrison Code: 101250 Content (Fiber Content): Copper Size: #5 AM 475 - Developer's Name: Miles Harrison	1 /Pieces		In Development	China	- YAB #5 Copper Swiss Teeth Platinum Metal Zipper - Harrison- 101250 n/a Price: \$0.35	- YAB #5 Copper Swiss Teeth Platinum Metal Zipper - Harrison- 101250 n/a Price: \$0.35	- YAB #5 Copper Swiss Teeth Platinum Metal Zipper - Harrison- 101250 n/a Price: \$0.35
3	1006 White 250M Guterman Natural Cotton Thread-Harrison Code: WkivC	1 /Pieces				- 1006 White 250M Guterman Natural Cotton Thread-Harrison- WkivC n/a Price: \$4.79	- 1006 White 250M Guterman Natural Cotton Thread-Harrison- WkivC n/a Price: \$4.79	- 1006 White 250M Guterman Natural Cotton Thread-Harrison- WkivC n/a Price: \$4.79
4	4 Hole Button Code: EPVV3 Supplier: SML	1 /Pieces		In Development		-  Black - SOL Custom Code: Black 6 C Price: \$0.04	-  Black - SOL Custom Code: Black 6 C Price: \$0.04	-  Black - SOL Custom Code: Black 6 C Price: \$0.04
LABELS AND PACKAGING								
5	Hang Tag Vice Versa - Harrison Code: TSwFI Supplier: To Be Determined Content (Fiber Content): Recycled Material Dye Method: N/A Size: 1" X 2" AM 475 - Developer's Name: Miles Harrison	1 /Pieces		In Development		-  0000 DTM Custom Code: 0000DTM Price: \$0.15	-  0000 DTM Custom Code: 0000DTM Price: \$0.15	-  0000 DTM Custom Code: 0000DTM Price: \$0.15
6	Vice Versa Care Label - Harrison Code: ElFeg Content (Fiber Content): 100% Recycled Cotton Dye Method: N/A Size: 1" X 2.5" AM 475 - Developer's Name: Miles Harrison	1 /Pieces		In Development		-  0000 DTM Custom Code: 0000DTM Price: \$0.05	-  0000 DTM Custom Code: 0000DTM Price: \$0.05	-  0000 DTM Custom Code: 0000DTM Price: \$0.05
7	Vice Versa Packaging - Harrison Code: jgjHg Supplier: To Be Determined Content (Fiber Content): Recycled Cardboard Size: 6 1/2" X 11" AM 475 - Developer's Name: Miles Harrison	1 /Pieces		In Development		-  0000 DTM Custom Code: 0000DTM Price: \$0.30	-  0000 DTM Custom Code: 0000DTM Price: \$0.30	-  0000 DTM Custom Code: 0000DTM Price: \$0.30
Components 7						Total \$33.68	Total \$33.68	Total \$33.68



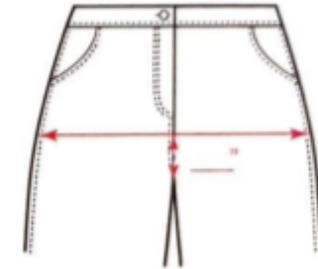
81.

Waistband Depth



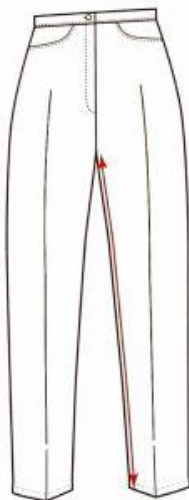
83.

Waistband Width Circumference (Woven)



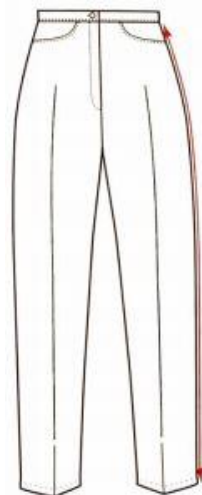
93.

Hip Seat Width Circumference (Woven Pant)



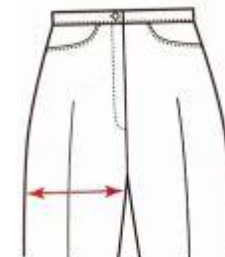
105.

Inseam



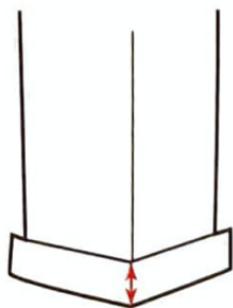
106.

Outseam



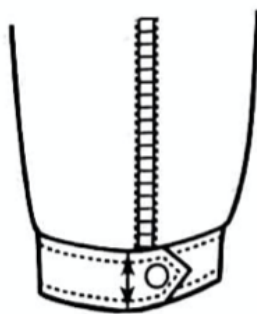
110.

Thigh Width Circumference (Woven)



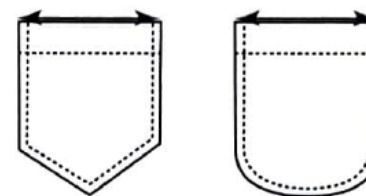
119.

Cuff Height Pants



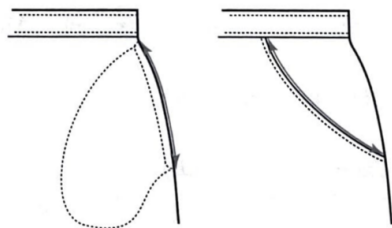
120.

Fly Zipper Length



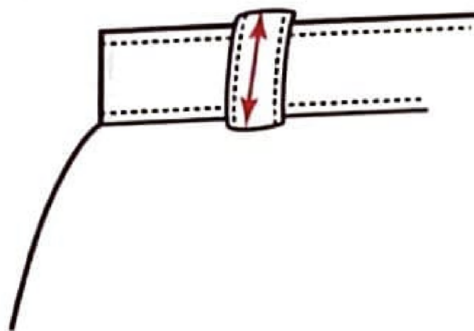
126.

Applied Pocket Width



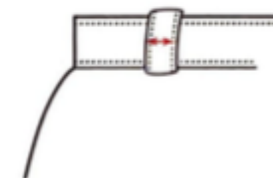
127.

Pocket Opening Within A Seam



130.

Belt Loop Length



131.

Belt Loop Width



Back Bottom Pocket Vertical



Back Bottom Pocket Horizontal



Skirt/Pant Yoke Depth Back



Sample Size: 32

POINT OF MEASURE	CODE	HOW TO MEASURE	CRITICAL	TYPE	TOLERANCE	30	32	34	36	38
Waistband Depth	81	Measure from top of waistband edge straight down to bottom of waistband at waistband joining seam. [Note: If waistband is contoured, indicate measurement change on spec sheet.]	false	Full	0 in	0 in	1 1/2 in	0 in	0 in	0 in
Waistband Width Circumference (woven)	83	Measure from side of bottom band to side of bottom band along center of band, following natural contour of waistband. Reporting half of the circumference measurement.	false	Half	1 in	-1 in	34 in	1 in	1 in	1 in
Hip Seat Width Circumference (woven pant)	93	Measure from edge of garment/side seam to edge of garment/side seam at a point up from crotch seam, following contour of waist. Reporting half of the circumference measurement.	true	Half	1 in	-1 in	41 in	1 in	1 in	1 in
Inseam	105	Measure from crotch joining seam to bottom of leg opening, following inseam/inner fold	true	Half	3/8 in	-3/8 in	34 in	3/8 in	3/8 in	3/8 in
Outseam	106	Measure from bottom edge of waistband/seam to bottom of garment along side seam/fold	true	Half	3/8 in	-3/8 in	40 1/4 in	3/8 in	3/8 in	3/8 in
Front Rise	107	Measure from bottom edge of waistband/seam to crotch joining seam, following curve of front rise seam	false	Full	3/8 in	-3/8 in	10 1/4 in	3/8 in	3/8 in	3/8 in
Back Rise	108	Measure from bottom edge of waistband/seam to crotch joining seam, following curve of back rise seam.	false	Full	3/8 in	-3/8 in	12 3/4 in	3/8 in	3/8 in	3/8 in
Thigh Width Circumference (woven)	110	Measure from pant leg edge/seam to pant leg edge/seam straight across pant leg @ 1" below crotch and parallel to leg opening. Reporting half of the circumference measurement.	false	Half	1/2 in	-1/2 in	23 in	1/2 in	1/2 in	1/2 in
Knee Width Circumference (Woven)	112	Measure from pant leg edge/seam to pant leg edge/seam at a point one-half of inseam and parallel to leg opening. Reporting half of the circumference measurement. (Note 1: If leg opening is asymmetrical, measure to a point that would be parallel to leg opening. Note 2: If pant leg is three-quarter length, indicate point of measure on spec sheet. Note 3: A general knee measurement from crotch seam of misses/women's 14", juniors 13", or large/plus women's sized 15" can be used. Indicate change on spec sheet. Measure children's at one-half inseam minus 1 1/2", and for men's minus 2")	true	Half	3/8 in	-3/8 in	22 in	3/8 in	3/8 in	3/8 in
Leg Opening Width Circumference (Woven)	114	Measure from pant leg edge/seam to pant edge/seam straight across bottom edge of leg opening. Reporting half of the circumference measurement. (Note: If leg opening is contoured, follow contour and indicate measurement change on spec sheet).	true	Half	1/4 in	-1/4 in	12 in	1/4 in	1/4 in	1/4 in
Cuff Height Pants	119	Measure from top of cuff edge straight down to bottom of cuff fold and leg opening.	true	Half	0 in	0 in	1/2 in	0 in	0 in	0 in



5 Pocket Utility Cargo Pants - Harrison - Style #100350

AM 475 - FA2022, Unisex/Non-Gendered, FA2022, 2022-2023

Size Specifications - Graded Rules

Fly Zipper Length	121A	Measure from top of fly/zipper opening straight down to bottom of fly/zipper opening at zipper stop or bar tack.	true	Full	0 in	0 in	6 1/4 in	0 in	0 in	0 in
Fly Zipper Width	121B	Measure top of fly/zipper at joining seam from edge/fold straight across.	true	Full	0 in	0 in	1 1/2 in	0 in	0 in	0 in
Applied Pocket Width	126	Measure from side of pocket to side of pocket along top edge of pocket (Note: For contoured or irregularly shaped pockets, take a second measurement and indicate point of measure in spec sheet.)	true	Full	0 in	0 in	5 in	0 in	0 in	0 in
Pocket Opening Within a Seam	127	Measure from top of pocket to bottom along edge of pocket opening	true	Full	0 in	0 in	6 5/8 in	0 in	0 in	0 in
Belt Loop Length	130	Measure from top of belt loop straight down/vertically to bottom of belt loop along center of belt loop. (Note: Fashion-forward or irregularly shaped belt loops may require further spec instructions. Indicate points of measure on spec sheet.)	true	Full	0 in	0 in	3 5/8 in	0 in	0 in	0 in
Belt Loop Width	131	Measure belt loop from edge of belt loop straight across / horizontally to edge of belt loop. (Note: Fashion-forward or irregularly shaped belt loops may require further spec instructions. Indicate point of measure on spec sheet.)	true	Full	0 in	0 in	5/8 in	0 in	0 in	0 in
Back Bottom Pocket Vertical	148E	Measure from waistband/joining seam/edge straight down to top edge of pocket.	false	Full	0 in	0 in	4 3/4 in	0 in	0 in	0 in
Back Bottom Pocket Horizontal	148F	Measure from center back straight across to side pocket at top edge.	false	Full	0 in	0 in	4 1/2 in	0 in	0 in	0 in
Cargo Pocket Length	90-012	Measurement from top of pocket to the bottom edge of pocket.	true	Full	1/8 in	-1/8 in	6 in	1/8 in	1/8 in	1/8 in
Cargo Pocket Width	90-012	Measure from the left edge of pocket horizontally to the right edge of the pocket.	true	Full	1/8 in	-1/8 in	4 1/2 in	1/8 in	1/8 in	1/8 in
Horizontal Cargo Pocket Placement from Inseam	90-014	Measure from the inseam edge horizontally to where the pocket edge begins. (This distance is symmetrical to the pant leg).	true	Full	1/8 in	-1/8 in	6 5/8 in	1/8 in	1/8 in	1/8 in
Skirt/Pant Yoke Depth Back	104	Measure from bottom of waistband/seam, straight down to bottom of yoke joining seam @ center back	false	Half	1/4 in	-1/4 in	7 1/4 in	1/4 in	1/4 in	1/4 in
yoke width	bpJ6NW	Measure front yoke seam from edge of arm cuff horizontally to the edge of other cuff.	true	Full	1 in	-1 in	12 1/4 in	1 in	1 in	1 in



5 Pocket Utility Cargo Pants - Harrison - Style #100350

AM 475 - FA2022, Unisex/Non-Gendered, FA2022, 2022-2023

Size Specifications - Graded Measurements

Sample Size: 32

POINT OF MEASURE	CODE	HOW TO MEASURE	CRITICAL	TYPE	TOLERANCE	30	32	34	36	38
Waistband Depth	81	Measure from top of waistband edge straight down to bottom of waistband at waistband joining seam. [Note: If waistband is contoured, indicate measurement change on spec sheet.]	false	Full	0 in	1 1/2 in	1 1/2 in	1 1/2 in	1 1/2 in	1 1/2 in
Waistband Width Circumference (woven)	83	Measure from side of bottom band to side of bottom band along center of band, following natural contour of waistband. Reporting half of the circumference measurement.	false	Half	1 in	33 in	34 in	35 in	36 in	37 in
Hip Seat Width Circumference (woven pant)	93	Measure from edge of garment/side seam to edge of garment/side seam at a point up from crotch seam, following contour of waist. Reporting half of the circumference measurement.	true	Half	1 in	40 in	41 in	42 in	43 in	44 in
Inseam	105	Measure from crotch joining seam to bottom of leg opening, following inseam/inner fold	true	Half	3/8 in	33 5/8 in	34 in	34 3/8 in	34 3/4 in	35 1/8 in
Outseam	106	Measure from bottom edge of waistband/seam to bottom of garment along side seam/fold	true	Half	3/8 in	39 7/8 in	40 1/4 in	40 5/8 in	41 in	41 3/8 in
Front Rise	107	Measure from bottom edge of waistband/seam to crotch joining seam, following curve of front rise seam	false	Full	3/8 in	9 7/8 in	10 1/4 in	10 5/8 in	11 in	11 3/8 in
Back Rise	108	Measure from bottom edge of waistband/seam to crotch joining seam, following curve of back rise seam.	false	Full	3/8 in	12 3/8 in	12 3/4 in	13 1/8 in	13 1/2 in	13 7/8 in
Thigh Width Circumference (woven)	110	Measure from pant leg edge/seam to pant leg edge/seam straight across pant leg @ 1" below crotch and parallel to leg opening. Reporting half of the circumference measurement.	false	Half	1/2 in	22 1/2 in	23 in	23 1/2 in	24 in	24 1/2 in
Knee Width Circumference (Woven)	112	Measure from pant leg edge/seam to pant leg edge/seam at a point one-half of inseam and parallel to leg opening. Reporting half of the circumference measurement. (Note 1: If leg opening is asymmetrical, measure to a point that would be parallel to leg opening. Note 2: If pant leg is three-quarter length, indicate point of measure on spec sheet. Note 3: A general knee measurement from crotch seam of misses/women's 14", juniors 13", or large/plus women's sized 15" can be used. Indicate change on spec sheet. Measure children's at one-half inseam minus 1 1/2", and for men's minus 2")	true	Half	3/8 in	21 5/8 in	22 in	22 3/8 in	22 3/4 in	23 1/8 in



5 Pocket Utility Cargo Pants - Harrison - Style #100350

AM 475 - FA2022, Unisex/Non-Gendered, FA2022, 2022-2023

Size Specifications - Graded Measurements

Leg Opening Width Circumference (Woven)	114	Measure from pant leg edge/seam to pant edge/seam straight across bottom edge of leg opening. Reporting half of the circumference measurement. (Note: If leg opening is contoured, follow contour and indicate measurement change on spec sheet).	true	Half	1/4 in	11 3/4 in	12 in	12 1/4 in	12 1/2 in	12 3/4 in
Cuff Height Pants	119	Measure from top of cuff edge straight down to bottom of cuff fold and leg opening.	true	Half	0 in	1/2 in	1/2 in	1/2 in	1/2 in	1/2 in
Fly Zipper Length	121A	Measure from top of fly/zipper opening straight down to bottom of fly/zipper opening at zipper stop or bar tack.	true	Full	0 in	6 1/4 in	6 1/4 in	6 1/4 in	6 1/4 in	6 1/4 in
Fly Zipper Width	121B	Measure top of fly/zipper at joining seam from edge/fold straight across.	true	Full	0 in	1 1/2 in	1 1/2 in	1 1/2 in	1 1/2 in	1 1/2 in
Applied Pocket Width	126	Measure from side of pocket to side of pocket along top edge of pocket (Note: For contoured or irregularly shaped pockets, take a second measurement and indicate point of measure in spec sheet.)	true	Full	0 in	5 in	5 in	5 in	5 in	5 in
Pocket Opening Within a Seam	127	Measure from top of pocket to bottom along edge of pocket opening	true	Full	0 in	6 5/8 in	6 5/8 in	6 5/8 in	6 5/8 in	6 5/8 in
Belt Loop Length	130	Measure from top of belt loop straight down/vertically to bottom of belt loop along center of belt loop. (Note: Fashion-forward or irregularly shaped belt loops may require further spec instructions. Indicate points of measure on spec sheet.)	true	Full	0 in	3 5/8 in	3 5/8 in	3 5/8 in	3 5/8 in	3 5/8 in
Belt Loop Width	131	Measure belt loop from edge of belt loop straight across / horizontally to edge of belt loop. (Note: Fashion-forward or irregularly shaped belt loops may require further spec instructions. Indicate point of measure on spec sheet.)	true	Full	0 in	5/8 in	5/8 in	5/8 in	5/8 in	5/8 in
Back Bottom Pocket Vertical	148E	Measure from waistband/joining seam/edge straight down to top edge of pocket.	false	Full	0 in	4 3/4 in	4 3/4 in	4 3/4 in	4 3/4 in	4 3/4 in
Back Bottom Pocket Horizontal	148F	Measure from center back straight across to side pocket at top edge.	false	Full	0 in	4 1/2 in	4 1/2 in	4 1/2 in	4 1/2 in	4 1/2 in
Cargo Pocket Length	90-012	Measurement from top of pocket to the bottom edge of pocket.	true	Full	1/8 in	5 7/8 in	6 in	6 1/8 in	6 1/4 in	6 3/8 in
Cargo Pocket Width	90-012	Measure from the left edge of pocket horizontally to the right edge of the pocket.	true	Full	1/8 in	4 3/8 in	4 1/2 in	4 5/8 in	4 3/4 in	4 7/8 in
Horizontal Cargo Pocket Placement from Inseam	90-014	Measure from the inseam edge horizontally to where the pocket edge begins. (This distance is symmetrical to the pant leg).	true	Full	1/8 in	6 1/2 in	6 5/8 in	6 3/4 in	6 7/8 in	7 in
Skirt/Pant Yoke Depth Back	104	Measure from bottom of waistband/seam, straight down to bottom of yoke joining seam @ center back	false	Half	1/4 in	7 in	7 1/4 in	7 1/2 in	7 3/4 in	8 in
yoke width	bpJ6NW	Measure front yoke seam from edge of arm cuff horizontally to the edge of other cuff.	true	Full	1 in	11 1/4 in	12 1/4 in	13 1/4 in	14 1/4 in	15 1/4 in



Sample Size: 32

POINT OF MEASURE	CODE	HOW TO MEASURE	CRITICAL	TYPE	TOLERANCE
Waistband Depth	81	Measure from top of waistband edge straight down to bottom of waistband at waistband joining seam. [Note: If waistband is contoured, indicate measurement change on spec sheet.]	false	Full	0 in
Waistband Width Circumference (woven)	83	Measure from side of bottom band to side of bottom band along center of band, following natural contour of waistband. Reporting half of the circumference measurement.	false	Half	1 in
Hip Seat Width Circumference (woven pant)	93	Measure from edge of garment/side seam to edge of garment/side seam at a point up from crotch seam, following contour of waist. Reporting half of the circumference measurement.	true	Half	1 in
Inseam	105	Measure from crotch joining seam to bottom of leg opening, following inseam/inner fold	true	Half	3/8 in
Outseam	106	Measure from bottom edge of waistband/seam to bottom of garment along side seam/fold	true	Half	3/8 in
Front Rise	107	Measure from bottom edge of waistband/seam to crotch joining seam, following curve of front rise seam	false	Full	3/8 in
Back Rise	108	Measure from bottom edge of waistband/seam to crotch joining seam, following curve of back rise seam.	false	Full	3/8 in
Thigh Width Circumference (woven)	110	Measure from pant leg edge/seam to pant leg edge/seam straight across pant leg @ 1" below crotch and parallel to leg opening. Reporting half of the circumference measurement.	false	Half	1/2 in
Knee Width Circumference (Woven)	112	Measure from pant leg edge/seam to pant leg edge/seam at a point one-half of inseam and parallel to leg opening. Reporting half of the circumference measurement. (Note 1: If leg opening is asymmetrical, measure to a point that would be parallel to leg opening. Note 2: If pant leg is three-quarter length, indicate point of measure on spec sheet. Note 3: A general knee measurement from crotch seam of misses/women's 14", juniors 13", or large/plus women's sized 15" can be used. Indicate change on spec sheet. Measure children's at one-half inseam minus 1 1/2", and for men's minus 2")	true	Half	3/8 in
Leg Opening Width Circumference (Woven)	114	Measure from pant leg edge/seam to pant edge/seam straight across bottom edge of leg opening. Reporting half of the circumference measurement. (Note: If leg opening is contoured, follow contour and indicate measurement change on spec sheet).	true	Half	1/4 in
Cuff Height Pants	119	Measure from top of cuff edge straight down to bottom of cuff fold fold and leg opening.	true	Half	0 in
Fly Zipper Length	121A	Measure from top of fly/zipper opening straight down to bottom of fly/zipper opening at zipper stop or bar tack.	true	Full	0 in
Fly Zipper Width	121B	Measure top of fly/zipper at joining seam from edge/fold straight across.	true	Full	0 in
Applied Pocket Width	126	Measure from side of pocket to side of pocket along top edge of pocket (Note: For contoured or irregularly shaped pockets, take a second measurement and indicate point of measure in spec sheet.)	true	Full	0 in
Pocket Opening Within a Seam	127	Measure from top of pocket to bottom along edge of pocket opening	true	Full	0 in



5 Pocket Utility Cargo Pants - Harrison - Style #100350

AM 475 - FA2022, Unisex/Non-Gendered, FA2022, 2022-2023

[Compare Samples](#)

Belt Loop Length	130	Measure from top of belt loop straight down/vertically to bottom of belt loop along center of belt loop. (Note: Fashion-forward or irregularly shaped belt loops may require further spec instructions. Indicate points of measure on spec sheet.)	true	Full	0 in
Belt Loop Width	131	Measure belt loop from edge of belt loop straight across / horizontally to edge of belt loop. (Note: Fashion-forward or irregularly shaped belt loops may require further spec instructions. Indicate point of measure on spec sheet.)	true	Full	0 in
Back Bottom Pocket Vertical	148E	Measure from waistband/joining seam/edge straight down to top edge of pocket.	false	Full	0 in
Back Bottom Pocket Horizontal	148F	Measure from center back straight across to side pocket at top edge.	false	Full	0 in
Cargo Pocket Length	90-012	Measurement from top of pocket to the bottom edge of pocket.	true	Full	1/8 in
Cargo Pocket Width	90-012	Measure from the left edge of pocket horizontally to the right edge of the pocket.	true	Full	1/8 in
Horizontal Cargo Pocket Placement from Inseam	90-014	Measure from the inseam edge horizontally to where the pocket edge begins. (This distance is symmetrical to the pant leg).	true	Full	1/8 in
Skirt/Pant Yoke Depth Back	104	Measure from bottom of waistband/seam, straight down to bottom of yoke joining seam @ center back	false	Half	1/4 in
yoke width	bpJ6NW	Measure front yoke seam from edge of arm cuff horizontally to the edge of other cuff.	true	Full	1 in