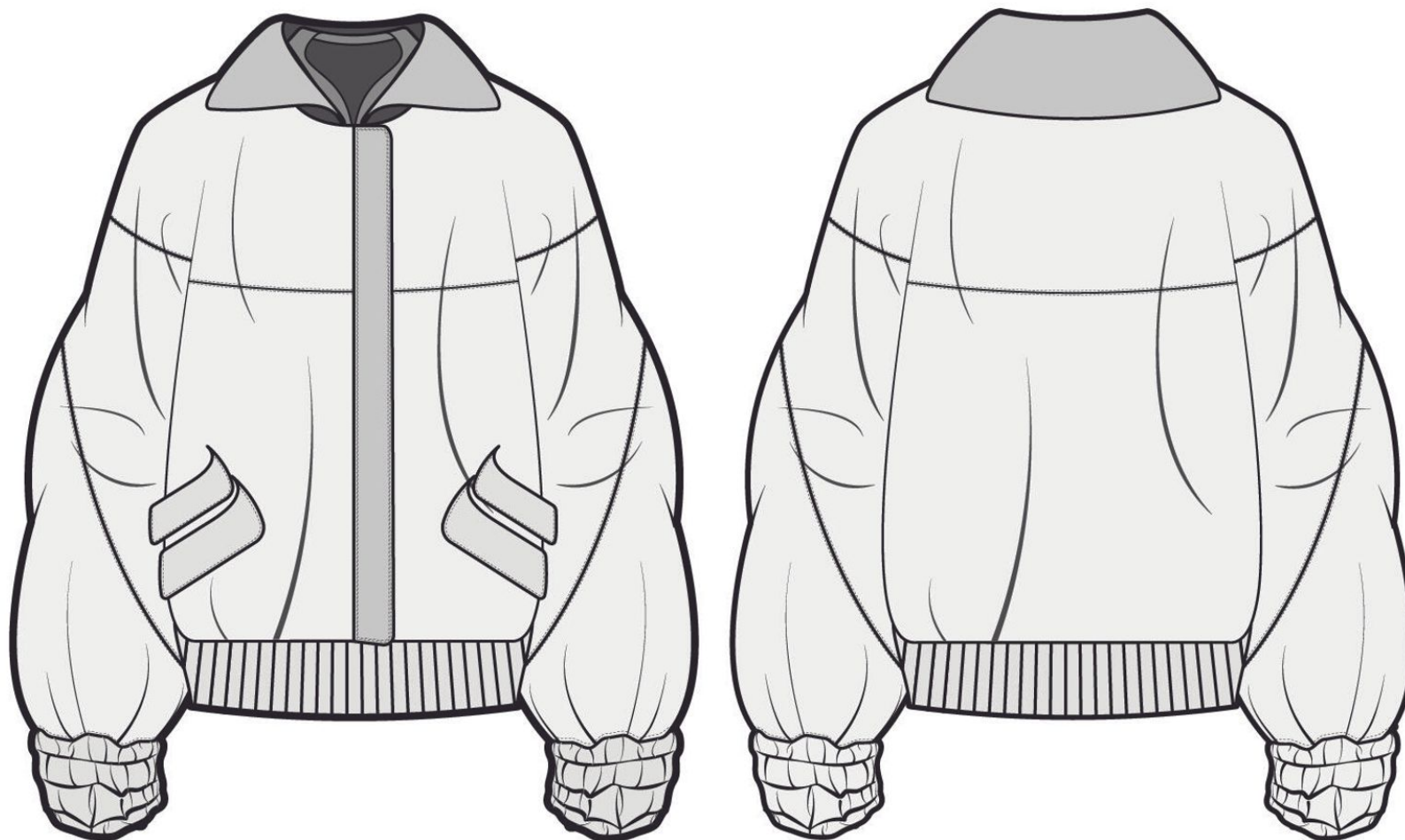


Bomber Jacket - Harrison

Name	Bomber Jacket - Harrison
Style No.	100450
Description	Oversized Bomber Jacket
Division	AM 475 - FA2022
Category	Unisex/Non-Gendered
Season	FA2022
Year	2022-2023
Size Scale	L -Sample size
	<div>S M L XL XXL</div>
Factory	To Be Determined
COO	Italy
Main Fabric	100% Balenciaga Stiff Cotton Denim
New/Carryover	New Style
Style Status	In Development
Sample Development Status	1st Sample
MSRP	145
Target Margin (%)	60
MOQ	3000/style/color
Leadtime	180 Days
AM 475 - Developer Name	Miles Harrison
Created by/Author	12/11/2022
	Miles Harrison
	millas@colostate.edu



Bomber Jacket BW Tech Pack-1



Bomber Jacket Color Way 1 Tech Pack-1

1. ● 272 C Mulberry - Harrison
Custom Code: 272 C Mulberry - Harrison



Bomber Jacket Color Way 2 Tech Pack-1

2. ● 504 C Wine - Harrison
Custom Code: 504 C Wine - Harrison



Bomber Jacket Color Way 3 Tech Pack-1

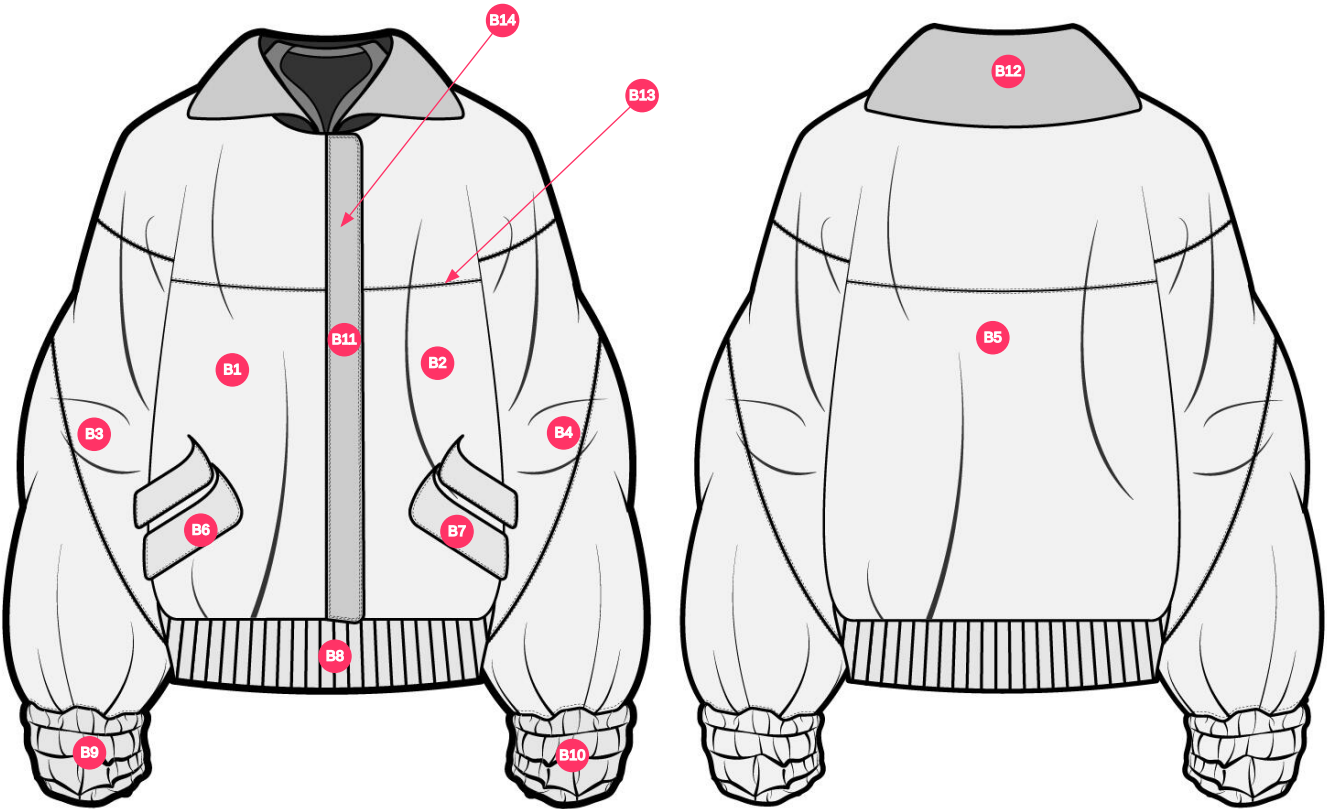
3. ● Key Lime - Harrison
Custom Code: Key Lime - Harrison



Bomber Jacket - Harrison - Style #100450

AM 475 - FA2022, Unisex/Non-Gendered, FA2022, 2022-2023

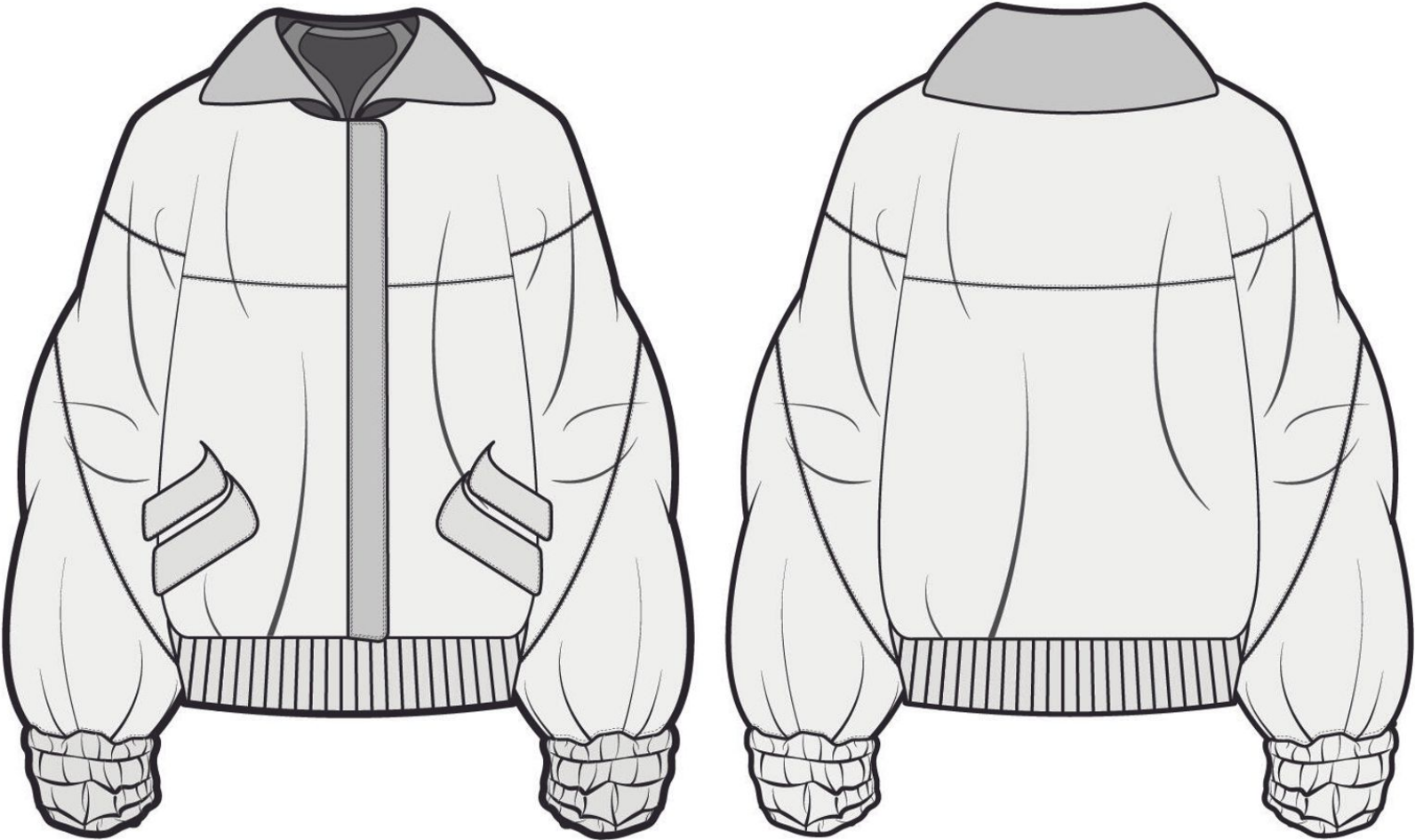
**Images / Annotated Component
Layout Image**



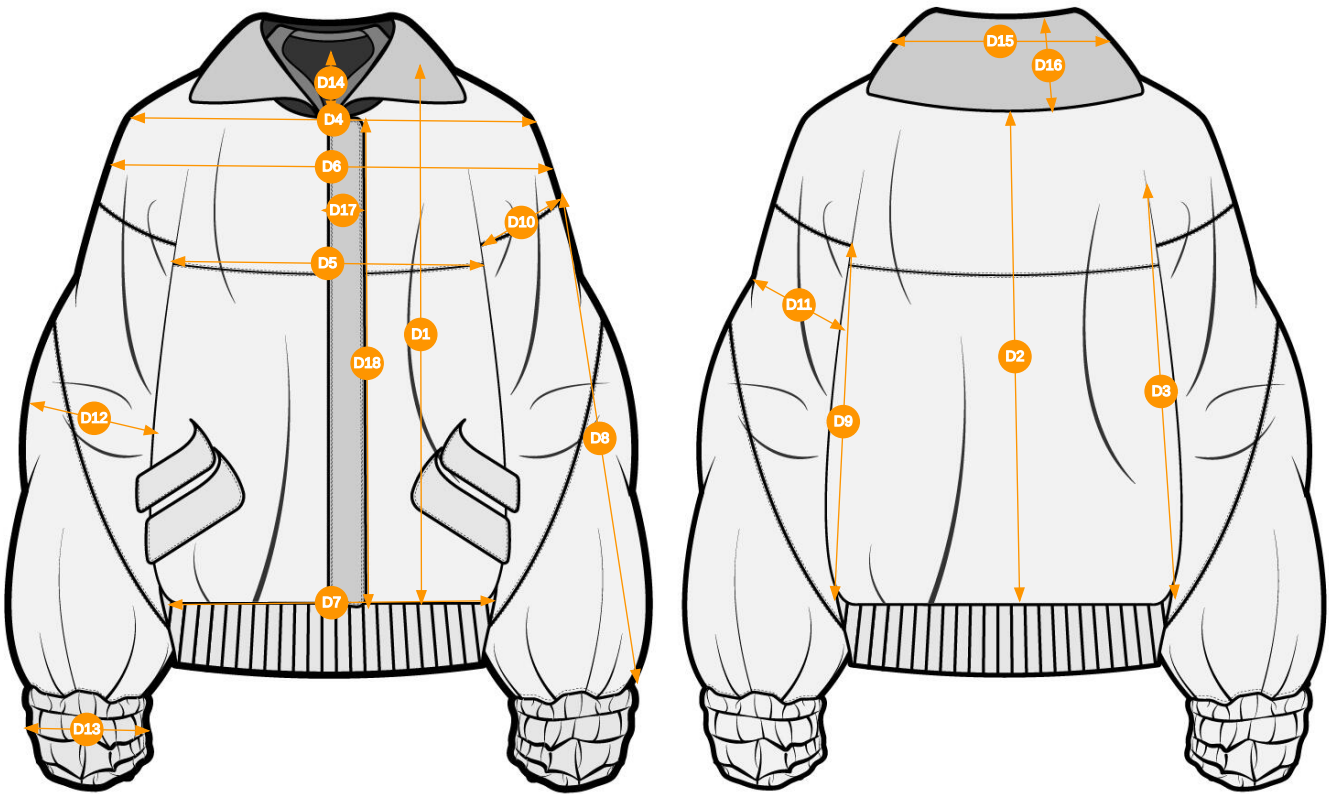
Components (14)

- B1** Balenciaga Italian Black Stiff Cotton Denim - Harrison
- B2** Balenciaga Italian Black Stiff Cotton Denim - Harrison
- B3** Balenciaga Italian Black Stiff Cotton Denim - Harrison
- B4** Balenciaga Italian Black Stiff Cotton Denim - Harrison
- B5** Balenciaga Italian Black Stiff Cotton Denim - Harrison
- B6** Genuine Cowhide Leather-Miles Harrison
- B7** Genuine Cowhide Leather-Miles Harrison
- B8** Rib Knit Cuff
- B9** Rib Knit Cuff
- B10** Rib Knit Cuff
- B11** Genuine Cowhide Leather-Miles Harrison
- B12** Genuine Cowhide Leather-Miles Harrison
- B13** 1006 White 250M Guterman Natural Cotton Thread-Harrison
- B14** YAB #5 Copper Swiss Teeth Platinum Metal Zipper - Harrison

Bomber Jacket BW Tech Pack-1 (Copy)



Bomber Jacket BW Tech Pack-1 (Copy)



Points of measure (18)

- D1** Front Length (garments with a front opening)
- D2** Center Back Length
- D3** side length
- D4** Across Shoulder
- D5** Chest Width Circumference (woven)
- D6** Across Chest
- D7** Waist Width Circumference (woven)
- D8** Sleeve Length Top Armhole
- D9** Sleeve Length Underarm
- D10** Curved Armhole Width Circumference (woven)
- D11** Muscle Width Circumference
- D12** elbow width circumference
- D13** Sleeve Opening Width Circumference, Stretched (Woven)
- D14** Neck Depth Center Front
- D15** Collar Length
- D16** Collar Height
- D17** Placket Width
- D18** Placket Length

Bomber Jacket BW Tech Pack-1 (Copy)



Photoshop Hang Tag mockup-1



Packaging Mockup-1



Care Label-1



Bomber Jacket - Harrison - Style #100450

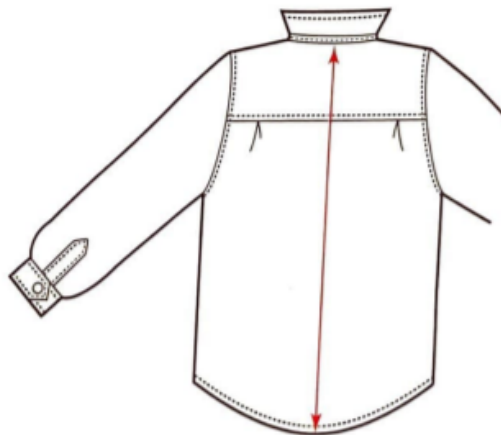
AM 475 - FA2022, Unisex/Non-Gendered, FA2022, 2022-2023

BOM > Set 1 of 1

COMPONENT		QTY	PLACEMENT	STATUS	COO	1. 272 C MULBERRY - HARRISON CODE: 272 C MULBERRY - HARRISON	2. 504 C WINE - HARRISON CODE: 504 C WINE - HARRISON	3. KEY LIME - HARRISON CODE: KEY LIME - HARRISON
1	Balenciaga Italian Black Stiff Cotton Denim - Harrison CODE: DnwaW Supplier: To Be Determined Content (Fiber Content): 100% Cotton Fabric Width: 60" Weight (GSM): 307 Dye Method: N/A AM 475 - Developer's Name: Miles Harrison	2.5 /yd		In Development	Italy	272 C Mulberry - Harrison Custom Code: 272 C Mulberry - Harrison Price: \$12.99	504 C Wine - Harrison Custom Code: 504 C Wine - Harrison Price: \$12.99	Key Lime - Harrison Custom Code: Key Lime - Harrison Price: \$12.99
2	Genuine Cowhide Leather-Miles Harrison CODE: PLHHw Content (Fiber Content): 100% Cow Hide Weight (GSM): 250 Dye Method: N/A AM 376 - Developer Name: Miles Harrison	2 /Sq/Ft		In Development	China	272 C Mulberry - Harrison Custom Code: 272 C Mulberry - Harrison Price: \$6.00	504 C Wine - Harrison Custom Code: 504 C Wine - Harrison Price: \$6.00	Key Lime - Harrison Custom Code: Key Lime - Harrison Price: \$6.00
TRIMS								
3	1006 White 250M Guterman Natural Cotton Thread-Harrison CODE: WkivC	0.25 /Pieces				1006 White 250M Guterman Natural Cotton Thread-Harrison- WkivC n/a Price: \$4.79	1006 White 250M Guterman Natural Cotton Thread-Harrison- WkivC n/a Price: \$4.79	1006 White 250M Guterman Natural Cotton Thread-Harrison- WkivC n/a Price: \$4.79
4	YAB #5 Copper Swiss Teeth Platinum Metal Zipper - Harrison CODE: 101250 Content (Fiber Content): Copper Size: #5 AM 475 - Developer's Name: Miles Harrison	1 /Pieces		In Development	China	YAB #5 Copper Swiss Teeth Platinum Metal Zipper - Harrison- 101250 n/a Price: \$0.35	YAB #5 Copper Swiss Teeth Platinum Metal Zipper - Harrison- 101250 n/a Price: \$0.35	YAB #5 Copper Swiss Teeth Platinum Metal Zipper - Harrison- 101250 n/a Price: \$0.35
5	Rib Knit Cuff CODE: PzRMK Supplier: To Be Determined Content (Fiber Content): Cotton Weight (GSM): 1000 Finishes: PureStretch Dye Method: Piece Dyed	2 /Pieces		In Development	China	Rib Knit Cuff- PzRMK n/a Price: \$1	Rib Knit Cuff- PzRMK n/a Price: \$1	Rib Knit Cuff- PzRMK n/a Price: \$1
PACKAGING AND LABELS								
6	Vice Versa Care Label - Harrison CODE: ElFeg Content (Fiber Content): 100% Recycled Cotton Dye Method: N/A Size: 1" X 2.5" AM 475 - Developer's Name: Miles Harrison	1 /Pieces		In Development		0000 DTM Custom Code: 0000DTM Price: \$0.05	0000 DTM Custom Code: 0000DTM Price: \$0.05	0000 DTM Custom Code: 0000DTM Price: \$0.05
7	Hang Tag Vice Versa - Harrison CODE: TSwFI Supplier: To Be Determined Content (Fiber Content): Recycled Material Dye Method: N/A Size: 1" X 2" AM 475 - Developer's Name: Miles Harrison	1 /Pieces		In Development		0000 DTM Custom Code: 0000DTM Price: \$0.15	0000 DTM Custom Code: 0000DTM Price: \$0.15	0000 DTM Custom Code: 0000DTM Price: \$0.15
8	Vice Versa Packaging - Harrison CODE: jgiHg Supplier: To Be Determined Content (Fiber Content): Recycled Cardboard Size: 6 1/2" X 11" AM 475 - Developer's Name: Miles Harrison	1 /Pieces		In Development		0000 DTM Custom Code: 0000DTM Price: \$0.30	0000 DTM Custom Code: 0000DTM Price: \$0.30	0000 DTM Custom Code: 0000DTM Price: \$0.30
Components 8						Total \$48.52	Total \$48.52	Total \$48.52



Front Length (Garments With A Front Opening)



3.

Center Back Length



Chest Width Circumference (Woven)

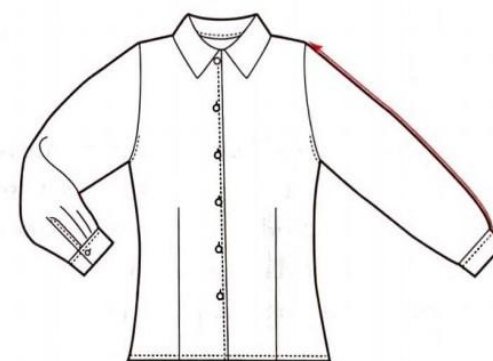


Across Shoulder



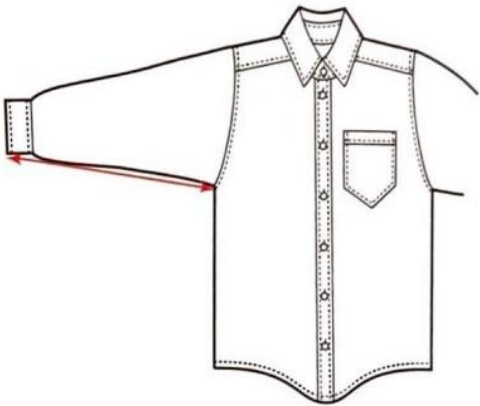
15.

Across Chest



36.

Sleeve Length Top Armhole



39.
Sleeve Length Underarm



Elbow Width Circumference



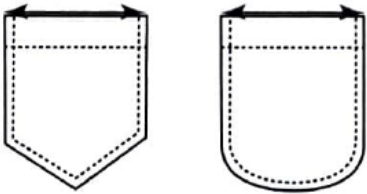
Sleeve Opening Width Circumference, Stretched (Woven)



59.
Neck Depth Center Front



27.
Bottom Opening/Sweep Width Circumference (Woven Top)

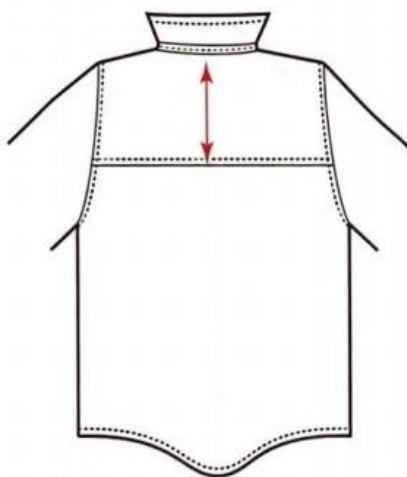


126.
Applied Pocket Width



148a.

Pocket Placement- Top Pocket Vertical



35.

Yoke Back Depth



148b.

Top Pocket Horizontal



Sample Size: L

POINT OF MEASURE	CODE	HOW TO MEASURE	CRITICAL	TYPE	TOLERANCE	S	M	L	XL	XXL
Front Length (garments with a front opening)	1	Measure from the HPS at neck straight down, parallel to CF, to bottom of garment at front. If garment has a collar, gently lift it away from shoulder-neck measuring point.	true	Full	1/2 in	-1/2 in	-1/2 in	23 1/2 in	1/2 in	1/2 in
Center Back Length	3	Measure from center back neck joining seam straight down to bottom of garment at center back. If needed, gently lift the collar away from back neck to expose joining seam.	false	Full	1/2 in	-1/2 in	-1/2 in	27 in	1/2 in	1/2 in
side length	YPX42I		true	Full	1/4 in	-1/4 in	-1/4 in	13 in	1/4 in	1/4 in
Chest Width Circumference (woven)	10	Measure from edge of garment/side seam to edge of garment/side seam straight across garment at a point 1" below armhole. Reporting half of the circumference measurement.	true	Half	3/4 in	-3/4 in	-3/4 in	27 1/2 in	3/4 in	3/4 in
Across Shoulder	13	Measure straight across front from armhole seam/edge to armhole seam/edge at shoulder seam or across natural shoulder fold line created if there is no seam.	false	Full	1/4 in	-1/4 in	-1/4 in	28 in	1/4 in	1/4 in
Across Chest	15	Measure 2 1/2" down from collar/rib joining seam at center front straight across front of garment from armhole seam/edge to armhole seam/edge. [Note: the 2 1/2" measurement point is for misses/womens wear only and may need to be adjusted up or down 1/4" to 1/2" accordingly for men's, children's, junior's and larger/plus sizes. Indicate any changes on spec sheet.]	false	Full	1/4 in	-1/4 in	-1/4 in	26 in	1/4 in	1/4 in
Waist Width Circumference (woven)	20	Measure from edge of garment/side seam to edge of garment/side seam straight across garment on seam or at narrowest point of waist taper at a point _____" below high point shoulder. Reporting half of the circumference measurement. [NOTE: You will have to determine number of inches down from high point shoulder for each raglan sleeve style based on depth of sleeve. Then indicate this number on spec sheet.]	false	Half	3/4 in	-3/4 in	-3/4 in	19 3/4 in	3/4 in	3/4 in
Sleeve Length Top Armhole	36	Measure along the top of sleeve/fold, following contour of sleeve from armhole sleeve at shoulder to bottom of sleeve opening, including cuff.	true	Full	3/8 in	-3/8 in	-3/8 in	31 1/2 in	3/8 in	3/8 in
Sleeve Length Underarm	39	Measure straight from bottom of armhole along sleeve seam to edge of sleeve opening, including cuff.	false	Full	3/8 in	-3/8 in	-3/8 in	18 1/2 in	3/8 in	3/8 in
Curved Armhole Width Circumference (woven)	43	Measure from top of shoulder joining seam/edge to bottom of armhole, following contour of armhole. Reporting half of the circumference measurement.	true	Half	3/8 in	-3/8 in	-3/8 in	12 1/2 in	3/8 in	3/8 in



Muscle Width Circumference	49	Measure from inner edge/seam to outer sleeve edge/fold at a point one inch below armhole and parallel to sleeve opening. Reporting half of the circumference measurement.	true	Half	1/4 in	-1/4 in	-1/4 in	9 1/2 in	1/4 in	1/4 in
elbow width circumference	51	measure from inner sleeve edge/seam to outer sleeve edge/fold stright across sleeve at a point one half of the underarm sleeve length and parallel to sleeve opening at wrist or cuff. Reporting half of the circumference measurement.	true	Half	1/4 in	-1/4 in	-1/4 in	8 3/4 in	1/4 in	1/4 in
Sleeve Opening Width Circumference, Stretched (Woven)	55	Measure from inner sleeve to outer sleeve across sleeve opening in fully extended position. Reporting half of the circumference measurement.	true	Half	1/4 in	-1/4 in	-1/4 in	4 1/2 in	1/4 in	1/4 in
Neck Depth Center Front	59	Measure from CB neck joining straight down to center of first button	true	Full	1/8 in	-1/8 in	-1/8 in	0 in	1/8 in	1/8 in
Collar Length	71	Measure from one end of collar to other end of collar along neck joining seam.	true	Full	1/4 in	0 in	0 in	18 in	0 in	0 in
Collar Height	72	Measure from collar/rib joining seam at center back neck straight up to outer edge.	true	Full	1/8 in	-1/8 in	-1/8 in	4 1/2 in	1/8 in	1/8 in
Lapel Width - Notched	76 A	Measure from lower lapel notch straight across to lapel fold at a point perpendicular to garment center front.	true	Full	1/8 in	-1/8 in	-1/8 in	3 1/2 in	1/8 in	1/8 in
Lapel Width - Without Nothces	76 B	Measure from lapel edge to straight across widest point of lapel to lapel fold at a point _____"down from center back collar joining seam and perpendicular to front of garment.	true	Full	1/8 in	0 in	0 in	0 in	0 in	0 in
Center Front Extension	77	Measure from an imaginary line at center front of garment horizontally to finish outer edge of front extended piece.	true	Full	0 in	0 in	0 in	2 in	0 in	0 in
Placket Length	78	Measure from top edge of placket straight down to bottom pf placket opening along center of placket.	true	Full	1/4 in	0 in	0 in	21 3/4 in	0 in	0 in
Placket Width	79	Measure from placket joining seam straight across placket to placket edge at fold.	true	Full	0 in	0 in	0 in	2 in	0 in	0 in
Low Hip Width Circumference from Waist (woven)	89	Measure from edge of garment/side seam to edge of garment/side seam at a point 7" below bottom of edge of waistband/seam following contour of waist. Reporting half of the circumference measurement.	true	Half	3/4 in	-3/4 in	-3/4 in	18 in	3/4 in	3/4 in
Bottom Opening/Sweep Width Circumference (woven top)	27	Measure from edge of garment/side seam straight across garment at bottom opening.Reporting half of the circumference measurement. [Note: if sweep has pleats, measure with pleats closed or relaxed.]	false	Half	3/4 in	-3/4 in	-3/4 in	22 1/2 in	3/4 in	3/4 in
Applied Pocket Width	126	Measure from side of pocket to side of pocket along top edge of pocket (Note: For contoured or irregularly shaped pockets, take a second measurement and indicate point of measure in spec sheet.)	true	Full	0 in	0 in	0 in	6 in	0 in	0 in



Pocket placement- Top Pocket Vertical	148A	Measure from shoulder neck joining seam straight down to top edge of pocket.	false	Full	0 in	0 in	0 in	12 in	0 in	0 in
Yoke Back Depth	35	Measure from center back neck joining seam straight down to bottom of back yoke-body joining seam. Gently lift collar away from back neck joining seam is needed.	false	Full	0 in	0 in	0 in	6 3/4 in	0 in	0 in
Top Pocket Horizontal	148B	Measure from center front straight across to side of pocket at top edge.	false	Full	0 in	0 in	0 in	5 1/2 in	0 in	0 in
Exterior Pocket Flap Length	x3eDqP	Bottom edge of flap to peak of flap curl.	true	Full	0 in	0 in	0 in	2 3/8 in	0 in	0 in
Exterior Pocket Flap Width	E4gPfy	Measure edge to edge at widest post.	true	Full	0 in	0 in	0 in	6 1/4 in	0 in	0 in



Sample Size: L

POINT OF MEASURE	CODE	HOW TO MEASURE	CRITICAL	TYPE	TOLERANCE	S	M	L	XL	XXL
Front Length (garments with a front opening)	1	Measure from the HPS at neck straight down, parallel to CF, to bottom of garment at front. If garment has a collar, gently lift it away from shoulder-neck measuring point.	true	Full	1/2 in	22 1/2 in	23 in	23 1/2 in	24 in	24 1/2 in
Center Back Length	3	Measure from center back neck joining seam straight down to bottom of garment at center back. If needed, gently lift the collar away from back neck to expose joining seam.	false	Full	1/2 in	26 in	26 1/2 in	27 in	27 1/2 in	28 in
side length	YPX42I		true	Full	1/4 in	12 1/2 in	12 3/4 in	13 in	13 1/4 in	13 1/2 in
Chest Width Circumference (woven)	10	Measure from edge of garment/side seam to edge of garment/side seam straight across garment at a point 1" below armhole. Reporting half of the circumference measurement.	true	Half	3/4 in	26 in	26 3/4 in	27 1/2 in	28 1/4 in	29 in
Across Shoulder	13	Measure straight across front from armhole seam/edge to armhole seam/edge at shoulder seam or across natural shoulder fold line created if there is no seam.	false	Full	1/4 in	27 1/2 in	27 3/4 in	28 in	28 1/4 in	28 1/2 in
Across Chest	15	Measure 2 1/2" down from collar/rib joining seam at center front straight across front of garment from armhole seam/edge to armhole seam/edge. [Note: the 2 1/2" measurement point is for misses/womens wear only and may need to be adjusted up or down 1/4" to 1/2" accordingly for men's, children's, junior's and larger/plus sizes. Indicate any changes on spec sheet.]	false	Full	1/4 in	25 1/2 in	25 3/4 in	26 in	26 1/4 in	26 1/2 in
Waist Width Circumference (woven)	20	Measure from edge of garment/side seam to edge of garment/side seam straight across garment on seam or at narrowest point of waist taper at a point _____" below high point shoulder. Reporting half of the circumference measurement. [NOTE: You will have to determine number of inches down from high point shoulder for each raglan sleeve style based on depth of sleeve. Then indicate this number on spec sheet.]	false	Half	3/4 in	18 1/4 in	19 in	19 3/4 in	20 1/2 in	21 1/4 in
Sleeve Length Top Armhole	36	Measure along the top of sleeve/fold, following contour of sleeve from armhole sleeve at shoulder to bottom of sleeve opening, including cuff.	true	Full	3/8 in	30 3/4 in	31 1/8 in	31 1/2 in	31 7/8 in	32 1/4 in
Sleeve Length Underarm	39	Measure straight from bottom of armhole along sleeve seam to edge of sleeve opening, including cuff.	false	Full	3/8 in	17 3/4 in	18 1/8 in	18 1/2 in	18 7/8 in	19 1/4 in



Curved Armhole Width Circumference (woven)	43	Measure from top of shoulder joining seam/edge to bottom of armhole, following contour of armhole. Reporting half of the circumference measurement.	true	Half	3/8 in	11 3/4 in	12 1/8 in	12 1/2 in	12 7/8 in	13 1/4 in
Muscle Width Circumference	49	Measure from inner edge/seam to outer sleeve edge/fold at a point one inch below armhole and parallel to sleeve opening. Reporting half of the circumference measurement.	true	Half	1/4 in	9 in	9 1/4 in	9 1/2 in	9 3/4 in	10 in
elbow width circumference	51	measure from inner sleeve edge/seam to outer sleeve edge/fold stright across sleeve at a point one half of the underarm sleeve length and parallel to sleeve opening at wrist or cuff. Reporting half of the circumference measurement.	true	Half	1/4 in	8 1/4 in	8 1/2 in	8 3/4 in	9 in	9 1/4 in
Sleeve Opening Width Circumference, Stretched (Woven)	55	Measure from inner sleeve to outer sleeve across sleeve opening in fully extended position. Reporting half of the circumference measurement.	true	Half	1/4 in	4 in	4 1/4 in	4 1/2 in	4 3/4 in	5 in
Neck Depth Center Front	59	Measure from CB neck joining straight down to center of first button	true	Full	1/8 in	-1/4 in	-1/8 in	0 in	1/8 in	1/4 in
Collar Length	71	Measure from one end of collar to other end of collar along neck joining seam.	true	Full	1/4 in	18 in	18 in	18 in	18 in	18 in
Collar Height	72	Measure from collar/rib joining seam at center back neck straight up to outer edge.	true	Full	1/8 in	4 1/4 in	4 3/8 in	4 1/2 in	4 5/8 in	4 3/4 in
Lapel Width - Notched	76 A	Measure from lower lapel notch straight across to lapel fold at a point perpendicular to garment center front.	true	Full	1/8 in	3 1/4 in	3 3/8 in	3 1/2 in	3 5/8 in	3 3/4 in
Lapel Width - Without Nothces	76 B	Measure from lapel edge to straight across widest point of lapel to lapel fold at a point ____"down from center back collar joining seam and perpendicular to front of garment.	true	Full	1/8 in	0 in	0 in	0 in	0 in	0 in
Center Front Extension	77	Measure from an imaginary line at center front of garment horizontally to finish outer edge of front extended piece.	true	Full	0 in	2 in	2 in	2 in	2 in	2 in
Placket Length	78	Measure from top edge of placket straight down to bottom pf placket opening along center of placket.	true	Full	1/4 in	21 3/4 in	21 3/4 in	21 3/4 in	21 3/4 in	21 3/4 in
Placket Width	79	Measure from placket joining seam straight across placket to placket edge at fold.	true	Full	0 in	2 in	2 in	2 in	2 in	2 in
Low Hip Width Circumference from Waist (woven)	89	Measure from edge of garment/side seam to edge of garment/side seam at a point 7" below bottom of edge of waistband/seam following contour of waist. Reporting half of the circumference measurement.	true	Half	3/4 in	16 1/2 in	17 1/4 in	18 in	18 3/4 in	19 1/2 in



Bottom Opening/Sweep Width Circumference (woven top)	27	Measure from edge of garment/side seam straight across garment at bottom opening.Reporting half of the circumference measurement. [Note: if sweep has pleats, measure with pleats closed or relaxed.]	false	Half	3/4 in	21 in	21 3/4 in	22 1/2 in	23 1/4 in	24 in
Applied Pocket Width	126	Measure from side of pocket to side of pocket along top edge of pocket (Note: For contoured or irregularly shaped pockets, take a second measurement and indicate point of measure in spec sheet.)	true	Full	0 in	6 in	6 in	6 in	6 in	6 in
Pocket placement- Top Pocket Vertical	148A	Measure from shoulder neck joining seam straight down to top edge of pocket.	false	Full	0 in	12 in	12 in	12 in	12 in	12 in
Yoke Back Depth	35	Measure from center back neck joining seam straight down to bottom of back yoke-body joining seam. Gently lift collar away from back neck joining seam is needed.	false	Full	0 in	6 3/4 in	6 3/4 in	6 3/4 in	6 3/4 in	6 3/4 in
Top Pocket Horizontal	148B	Measure from center front straight across to side of pocket at top edge.	false	Full	0 in	5 1/2 in	5 1/2 in	5 1/2 in	5 1/2 in	5 1/2 in
Exterior Pocket Flap Length	x3eDqP	Bottom edge of flap to peak of flap curl.	true	Full	0 in	2 3/8 in	2 3/8 in	2 3/8 in	2 3/8 in	2 3/8 in
Exterior Pocket Flap Width	E4gPfy	Measure edge to edge at widest post.	true	Full	0 in	6 1/4 in	6 1/4 in	6 1/4 in	6 1/4 in	6 1/4 in



Sample Size: L

POINT OF MEASURE	CODE	HOW TO MEASURE	CRITICAL	TYPE	TOLERANCE
Front Length (garments with a front opening)	1	Measure from the HPS at neck straight down, parallel to CF, to bottom of garment at front. If garment has a collar, gently lift it away from shoulder-neck measuring point.	true	Full	1/2 in
Center Back Length	3	Measure from center back neck joining seam straight down to bottom of garment at center back. If needed, gently lift the collar away from back neck to expose joining seam.	false	Full	1/2 in
side length	YPX42I		true	Full	1/4 in
Chest Width Circumference (woven)	10	Measure from edge of garment/side seam to edge of garment/side seam straight across garment at a point 1" below armhole. Reporting half of the circumference measurement.	true	Half	3/4 in
Across Shoulder	13	Measure straight across front from armhole seam/edge to armhole seam/edge at shoulder seam or across natural shoulder fold line created if there is no seam.	false	Full	1/4 in
Across Chest	15	Measure 2 1/2" down from collar/rib joining seam at center front straight across front of garment from armhole seam/edge to armhole seam/edge. [Note: the 2 1/2" measurement point is for misses/womens wear only and may need to be adjusted up or down 1/4" to 1/2" accordingly for men's, children's, junior's and larger/plus sizes. Indicate any changes on spec sheet.]	false	Full	1/4 in
Waist Width Circumference (woven)	20	Measure from edge of garment/side seam to edge of garment/side seam straight across garment on seam or at narrowest point of waist taper at a point _____" below high point shoulder. Reporting half of the circumference measurement. [NOTE: You will have to determine number of inches down from high point shoulder for each raglan sleeve style based on depth of sleeve. Then indicate this number on spec sheet.]	false	Half	3/4 in
Sleeve Length Top Armhole	36	Measure along the top of sleeve/fold, following contour of sleeve from armhole sleeve at shoulder to bottom of sleeve opening, including cuff.	true	Full	3/8 in
Sleeve Length Underarm	39	Measure straight from bottom of armhole along sleeve seam to edge of sleeve opening, including cuff.	false	Full	3/8 in
Curved Armhole Width Circumference (woven)	43	Measure from top of shoulder joining seam/edge to bottom of armhole, following contour of armhole. Reporting half of the circumference measurement.	true	Half	3/8 in
Muscle Width Circumference	49	Measure from inner edge/seam to outer sleeve edge/fold at a point one inch below armhole and parallel to sleeve opening. Reporting half of the circumference measurement.	true	Half	1/4 in
elbow width circumference	51	measure from inner sleeve edge/seam to outer sleeve edge/fold stright across sleeve at a point one half of the underarm sleeve length and parallel to sleeve opening at wrist or cuff. Reporting half of the circumference measurement.	true	Half	1/4 in
Sleeve Opening Width Circumference, Stretched (Woven)	55	Measure from inner sleeve to outer sleeve across sleeve opening in fully extended position. Reporting half of the circumference measurement.	true	Half	1/4 in
Neck Depth Center Front	59	Measure from CB neck joining straight down to center of first button	true	Full	1/8 in



Bomber Jacket - Harrison - Style #100450

AM 475 - FA2022, Unisex/Non-Gendered, FA2022, 2022-2023

[Compare Samples](#)

Collar Length	71	Measure from one end of collar to other end of collar along neck joining seam.	true	Full	1/4 in
Collar Height	72	Measure from collar/rib joining seam at center back neck straight up to outer edge.	true	Full	1/8 in
Lapel Width - Notched	76 A	Measure from lower lapel notch straight across to lapel fold at a point perpendicular to garment center front.	true	Full	1/8 in
Lapel Width - Without Nothces	76 B	Measure from lapel edge to straight across widest point of lapel to lapel fold at a point _____"down from center back collar joining seam and perpendicular to front of garment.	true	Full	1/8 in
Center Front Extension	77	Measure from an imaginary line at center front of garment horizontally to finish outer edge of front extended piece.	true	Full	0 in
Placket Length	78	Measure from top edge of placket straight down to bottom pf placket opening along center of placket.	true	Full	1/4 in
Placket Width	79	Measure from placket joining seam straight across placket to placket edge at fold.	true	Full	0 in
Low Hip Width Circumference from Waist (woven)	89	Measure from edge of garment/side seam to edge of garment/side seam at a point 7" below bottom of edge of waistband/seam following contour of waist. Reporting half of the circumference measurement.	true	Half	3/4 in
Bottom Opening/Sweep Width Circumference (woven top)	27	Measure from edge of garment/side seam straight across garment at bottom opening.Reporting half of the circumference measurement. [Note: if sweep has pleats, measure with pleats closed or relaxed.]	false	Half	3/4 in
Applied Pocket Width	126	Measure from side of pocket to side of pocket along top edge of pocket (Note: For contoured or irregularly shaped pockets, take a second measurement and indicate point of measure in spec sheet.)	true	Full	0 in
Pocket placement- Top Pocket Vertical	148A	Measure from shoulder neck joining seam straight down to top edge of pocket.	false	Full	0 in
Yoke Back Depth	35	Measure from center back neck joining seam straight down to bottom of back yoke-body joining seam. Gently lift collar away from back neck joining seam is needed.	false	Full	0 in
Top Pocket Horizontal	148B	Measure from center front straight across to side of pocket at top edge.	false	Full	0 in
Exterior Pocket Flap Length	x3eDqP	Bottom edge of flap to peak of flap curl.	true	Full	0 in
Exterior Pocket Flap Width	E4gPfy	Measure edge to edge at widest post.	true	Full	0 in